

# Chip Ceramic Filters

## LTCS10.7M Low Profile Chip Ceramic Filter is Murata SF ECS10M7 Compatible

### ▶ Preview

Token LTCS10.7M Chip Ceramic Filter for FM-receiver utilizes the latest piezoelectric ceramic technology enabling the most cost-effective designs. The LTCS10.7M constructs with piezoelectric element which is connected in the sandwich shape by ceramics substrate. With a small mounting area ( $3.45 \pm 0.2 \times 3.1 \pm 0.2$  mm) and super thin profile (1.4 mm max.) enables flexible PCB design. Products conform to the RoHS directive.



Various bandwidths are available including standard and custom bandwidth on request with 30 db Minimum Spurious Attenuation at (9-12MHz). Maximum Insertion Loss (dB)  $3.5 \pm 2.0$  db ~  $4.5 \pm 2.0$  db and Input/Output Impedance  $330\Omega$  provide customers select a suitable type in accordance with the desired selectivity.

Custom parts are available on request. Token will also produce devices outside these specifications to meet specific customer requirements, please contact our sales for more information.

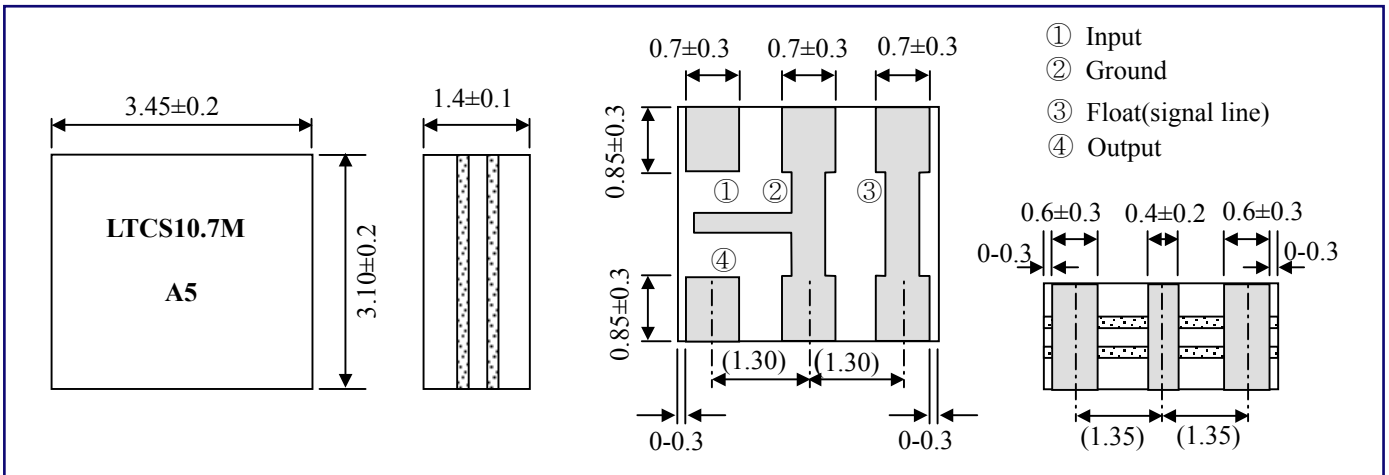
### ▶ Features

- Mountable by automatic placers.
- Storage temperature range:  $-40$  to  $+85$  ( °C ).
- Operating temperature range:  $-20$  to  $+80$  ( °C ).
- Various bandwidths are available. Select a suitable type in accordance with the desired selectivity.
- Slim at only 1.5mm max. thickness, and have a small mounting area enabling flexible PCB design.

### ▶ Applications

- Small, thin radios.
- Headphone stereos.

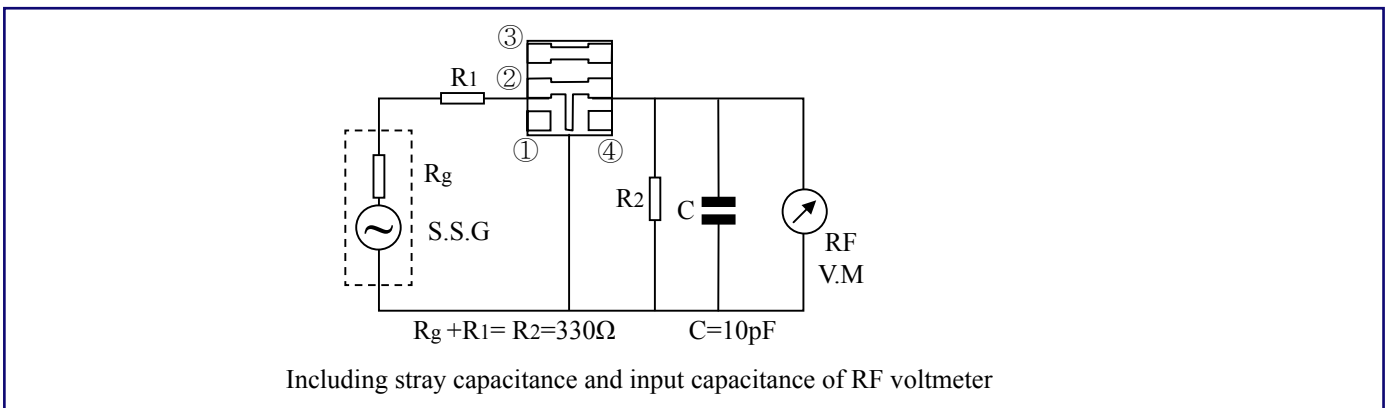
## Dimensions



## Technical Characteristics

Part Number	3dB Band Width (kHz)	20dB Band Width (kHz)max	Insertion Loss (dB)max	Spurious Attenuation (9-12MHz)(dB)min
LTCS10.7MS2	230±50	510	3.5±2.0	30
LTCS10.7MS3	180±40	470	4.5±2.0	30
LTCS10.7MA5	280±50	590	3.0±2.0	30
LTCS10.7MA20	330±50	700	3.0±2.0	30

## Test Circuit



## How to Order

LTCS10.7MS2

①

① Part Number

TR

②

② Packaging:( TR : Taping Reel )

*Back to 1st Page - Chip Ceramic Filters - LTCS10.7M*